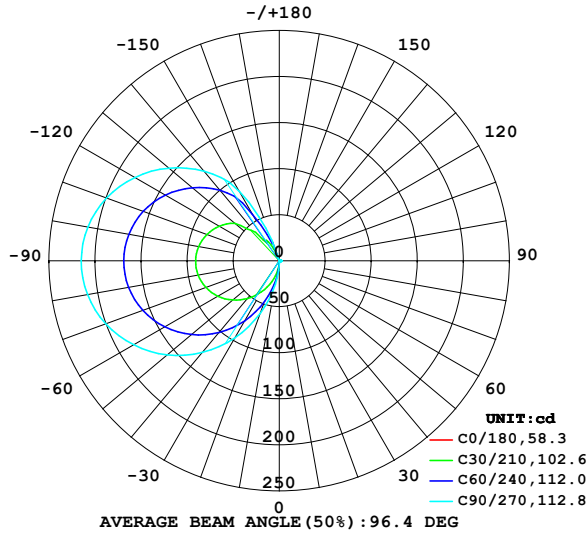


## LUMINAIRE PHOTOMETRIC TEST REPORT

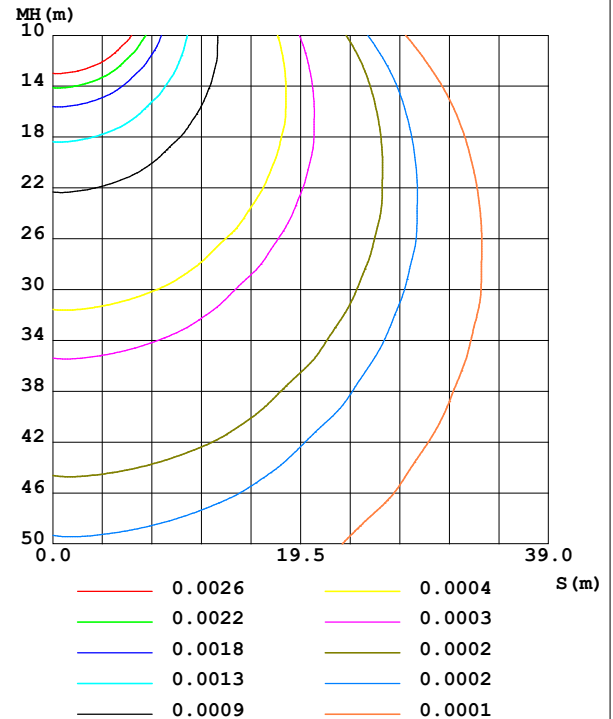
NAME: 99LPL094/BL	TYPE:	WEIGHT: 1
SPEC.:	DIM.: 300 x 110 x 25	SERIAL No.: 0
MFR.: Elmark Industries JSC	SUR.: rectangle	Shielding Angle:

DATA OF LAMP		PHOTOMETRIC DATA			
MODEL	99LPL094/BL	I <sub>max</sub> (cd)	215.0	S/MH (C0/180)	1.55
NOMINAL POWER (W)	9.4	LOR (%)	94.4	S/MH (C90/270)	17.57
RATED VOLTAGE (V)	230	TOTAL FLUX (lm)	576.98	η UP, DN (C0-180)	0.4, 0.5
NOMINAL FLUX (lm)	611	CIE CLASS	DIFFUSE	η UP, DN (C180-360)	45.5, 48.0
LAMPS INSIDE	1	η up (%)	45.9	CIBSE SHR NOM	0.00
TEST VOLTAGE (V)	230	η down (%)	48.5	CIBSE SHR MAX	0.00

LUMINOUS INTENSITY DISTRIBUTION DIAGRAM



C0 PLANE ISOLUX DIAGRAM (UNIT: lx)



C Range: 0 - 360DEG  
C Interval: 10.0DEG  
Test Speed: HIGH  
Temperature: 25.3°C  
Operators:  
Test Date: 13 December 2022

γ Range: 0 - 160DEG  
γ Interval: 2.5DEG  
Test System: EVERFINE GO-2000A\_V1 SYSTEM V2.00.456  
Humidity: 65.0%  
Test Distance: 6.265m [K=1.0000]  
Remarks:

### ZONAL FLUX DIAGRAM

#### ZONAL FLUX DIAGRAM:

$\gamma$	C0	C45	C90	C135	C180	C225	C270	C315	$\gamma$	$\Phi$ zone	$\Phi$ total	%lum, lamp
10	0.4534	0.4580	0.5052	0.4546	0.4366	15.64	25.95	15.51	0- 10	0.4416	0.4416	0.08,0.07
20	0.4506	0.5002	0.6516	0.5107	0.4338	36.51	60.74	35.77	10- 20	3.625	4.066	0.70,0.67
30	0.4394	0.6060	0.9304	0.6298	0.4338	58.86	96.75	57.40	20- 30	10.52	14.58	2.53,2.39
40	0.4227	0.7668	1.215	0.8062	0.4702	80.12	130.0	78.01	30- 40	20.48	35.07	6.08,5.74
50	0.4031	0.9027	1.475	0.9586	0.5740	98.77	159.0	96.07	40- 50	32.24	67.30	11.7,11
60	0.3807	1.020	1.714	1.094	0.7756	114.0	182.5	110.8	50- 60	44.24	111.5	19.3,18.3
70	0.3443	1.109	1.877	1.195	0.9909	125.2	200.4	121.6	60- 70	54.93	166.5	28.9,27.2
80	0.3051	1.158	1.957	1.243	1.047	131.9	211.5	128.1	70- 80	62.93	229.4	39.8,37.5
90	0.2771	1.163	1.952	1.246	0.9122	133.9	215.0	130.0	80- 90	67.10	296.5	51.4,48.5
100	0.2659	1.129	1.891	1.218	0.6996	131.5	211.2	127.6	90-100	66.96	363.5	63,59.5
110	0.2575	1.039	1.728	1.136	0.3216	124.2	199.6	120.5	100-110	62.52	426.0	73.8,69.7
120	0.2491	0.9067	1.532	1.016	0.2099	112.5	181.2	109.1	110-120	54.17	480.2	83.2,78.6
130	0.2407	0.7591	1.289	0.8811	0.2099	96.75	156.6	93.82	120-130	42.83	523.0	90.6,85.6
140	0.2323	0.6151	1.021	0.7394	0.2099	75.39	127.0	72.82	130-140	30.23	553.2	95.9,90.5
150	0.2211	0.4804	0.7690	0.6097	0.2099	32.67	86.62	29.17	140-150	17.53	570.7	98.9,93.4
160	0.2127	0.3656	0.5625	0.4960	0.2099	15.35	23.74	13.22	150-160	5.942	576.7	99.9,94.4
170	0	0	0	0	0	0	0	0	160-170	0.3027	577.0	100,94.4
180	0	0	0	0	0	0	0	0	170-180	0	577.0	100,94.4
DEG	LUMINOUS INTENSITY:cd									UNIT:lm		

Conical surface Flux(90deg): 49.663 lm

%lum = 8.6%

%lamp = 8.1%

Conical surface Flux(130deg): 137.82 lm

%lum = 23.9%

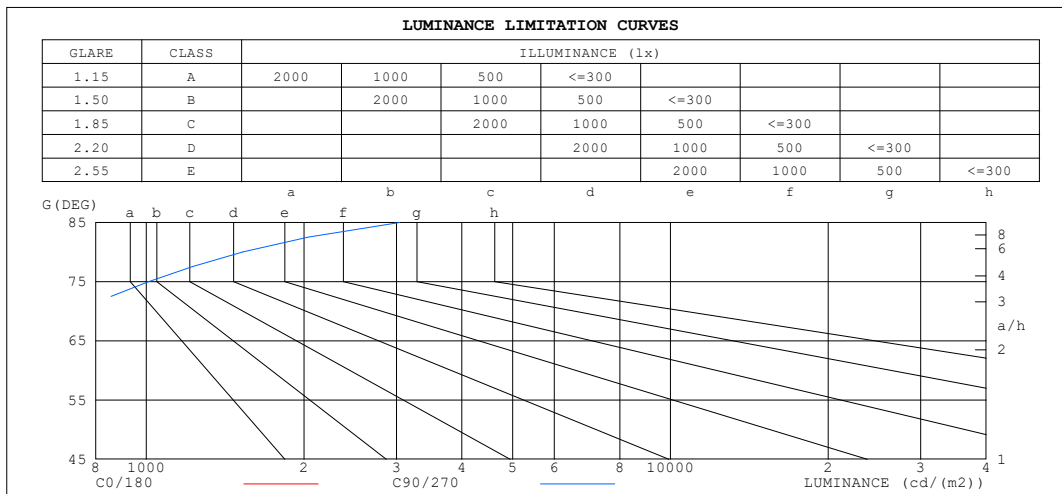
%lamp = 22.6%

C Range: 0 - 360DEG  
C Interval: 10.0DEG  
Test Speed: HIGH  
Temperature:25.3°C  
Operators:  
Test Date:13 December 2022

$\gamma$  Range: 0 - 160DEG  
 $\gamma$  Interval: 2.5DEG  
Test System:EVERFINE GO-2000A\_V1 SYSTEM V2.00.456  
Humidity:65.0%  
Test Distance:6.265m [K=1.0000]  
Remarks:

### LUMINANCE LIMITATION CURVES

NAME: 99LPL094/BL	TYPE:	WEIGHT: 1
SPEC.:	DIM.: 300 x 110 x 25	SERIAL No.: 0
MFR.: Elmark Industries JSC	SUR.: rectangle	Shielding Angle:



LUMINANCE cd/(m2)		
G (DEG)	C0/180	C90/270
85	464	3043
80	244	1527
75	176	1010
70	140	744
65	121	579
60	106	464
55	95	378
50	87	311
45	81	259

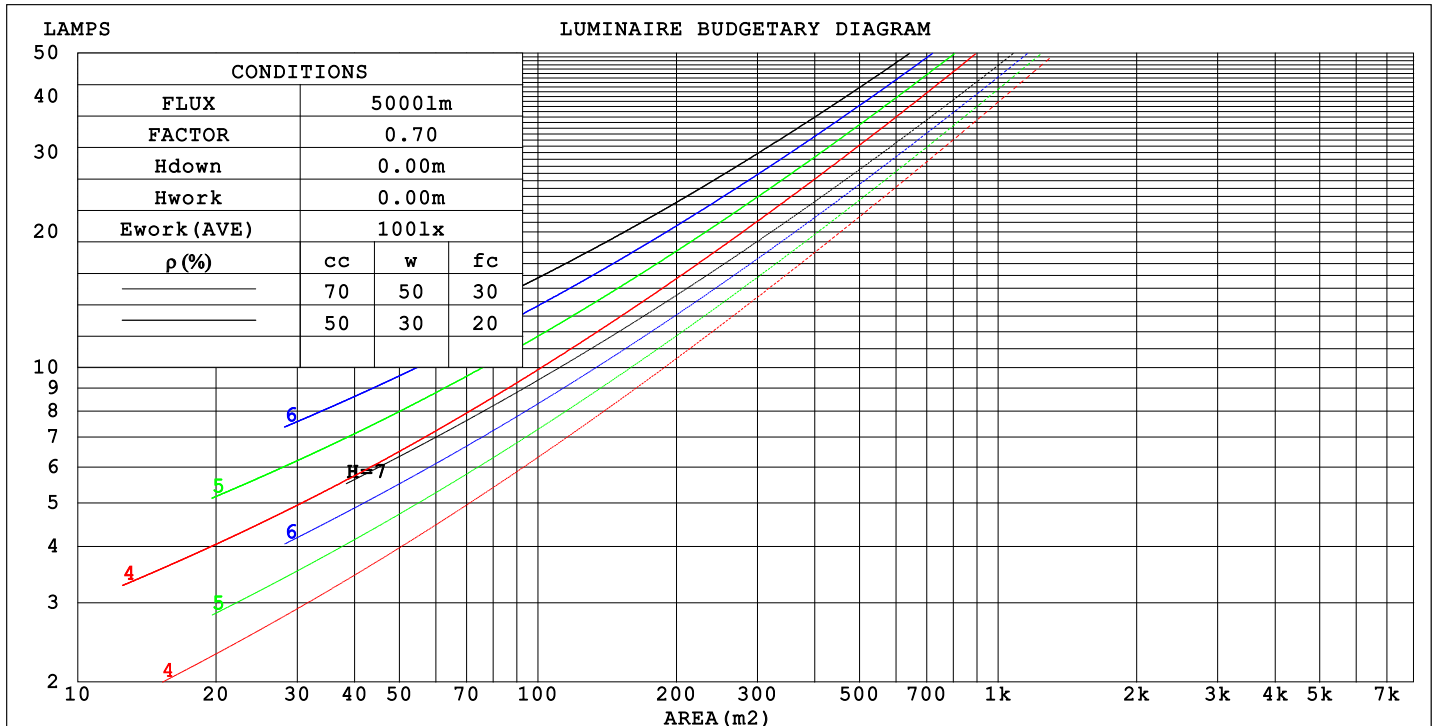
C Range: 0 - 360DEG  
C Interval: 10.0DEG  
Test Speed: HIGH  
Temperature: 25.3°C  
Operators:  
Test Date: 13 December 2022

γ Range: 0 - 160DEG  
γ Interval: 2.5DEG  
Test System: EVERFINE GO-2000A\_V1 SYSTEM V2.00.456  
Humidity: 65.0%  
Test Distance: 6.265m [K=1.0000]  
Remarks:

## CU AND LUMINAIRE BUDGETARY ESTIMATE DIAGRAM

NAME: 99LPL094/BL	TYPE:	WEIGHT: 1
SPEC.:	DIM.: 300 x 110 x 25	SERIAL No.: 0
MFR.: Elmark Industries JSC	SUR.: rectangle	Shielding Angle:

pcc	80%			70%			50%			30%			10%			0
pw	50%	30%	10%	50%	30%	10%	50%	30%	10%	50%	30%	10%	50%	30%	10%	0
pfc	20%			20%			20%			20%			20%			0
RCR	RCR:Room Cavity Ratio															



C Range: 0 - 360DEG  
C Interval: 10.0DEG  
Test Speed: HIGH  
Temperature:25.3°C  
Operators:  
Test Date:13 December 2022

γ Range: 0 - 160DEG  
γ Interval: 2.5DEG  
Test System:EVERFINE GO-2000A\_V1 SYSTEM V2.00.456  
Humidity:65.0%  
Test Distance:6.265m [K=1.0000]  
Remarks:

## WEC AND CCEC

NAME: 99LPL094/BL	TYPE:	WEIGHT: 1
SPEC.:	DIM.: 300 x 110 x 25	SERIAL No.: 0
MFR.: Elmark Industries JSC	SUR.: rectangle	Shielding Angle:

pcc	80%			70%			50%			30%			10%			0
pw	50%	30%	10%	50%	30%	10%	50%	30%	10%	50%	30%	10%	50%	30%	10%	0
pfc	20%			20%			20%			20%			20%			0
RCR	RCR:Room Cavity Ratio						Wall Exitance Coefficients(WEC)									
0.0																
1.0	.420	.239	.076	.399	.227	.072	.360	.206	.066	.324	.187	.060	.290	.168	.054	
2.0	.345	.189	.058	.326	.179	.055	.290	.161	.050	.257	.144	.045	.226	.128	.040	
3.0	.297	.158	.047	.280	.150	.045	.247	.134	.041	.217	.119	.036	.189	.105	.032	
4.0	.263	.137	.040	.247	.129	.038	.217	.115	.034	.189	.101	.031	.163	.089	.027	
5.0	.236	.120	.035	.221	.114	.033	.194	.101	.030	.168	.089	.026	.144	.077	.023	
6.0	.214	.107	.031	.201	.101	.029	.175	.090	.026	.151	.079	.023	.129	.068	.020	
7.0	.196	.097	.027	.183	.091	.026	.160	.081	.023	.138	.071	.021	.117	.061	.018	
8.0	.180	.088	.025	.169	.083	.024	.147	.074	.021	.127	.064	.018	.107	.055	.016	
9.0	.167	.081	.023	.157	.076	.021	.136	.067	.019	.117	.059	.017	.099	.050	.015	
10.0	.156	.075	.021	.146	.071	.020	.127	.062	.018	.109	.054	.015	.092	.046	.013	

pcc	80%			70%			50%			30%			10%			0
pw	50%	30%	10%	50%	30%	10%	50%	30%	10%	50%	30%	10%	50%	30%	10%	0
pfc	20%			20%			20%			20%			20%			0
RCR	RCR:Room Cavity Ratio						Ceiling Cavity Exitance Coefficients (CCEC)									
0.0	.530	.530	.530	.453	.453	.453	.309	.309	.309	.177	.177	.177	.057	.057	.057	
1.0	.532	.499	.469	.455	.428	.404	.311	.295	.279	.179	.170	.163	.057	.055	.053	
2.0	.527	.479	.439	.451	.413	.380	.309	.285	.265	.178	.166	.155	.057	.054	.051	
3.0	.520	.465	.421	.446	.401	.365	.306	.279	.256	.177	.163	.151	.057	.053	.049	
4.0	.513	.454	.409	.441	.393	.356	.303	.274	.250	.175	.160	.148	.056	.052	.049	
5.0	.506	.446	.402	.435	.386	.349	.299	.270	.247	.173	.158	.146	.056	.052	.048	
6.0	.499	.439	.396	.429	.380	.345	.296	.266	.244	.172	.157	.145	.055	.051	.048	
7.0	.493	.433	.392	.424	.376	.342	.293	.263	.242	.170	.155	.144	.055	.051	.048	
8.0	.486	.429	.389	.419	.372	.339	.290	.261	.241	.169	.154	.143	.055	.050	.047	
9.0	.480	.424	.386	.414	.368	.337	.287	.259	.239	.167	.153	.143	.054	.050	.047	
10.0	.475	.421	.385	.409	.365	.336	.284	.257	.238	.166	.152	.142	.054	.050	.047	

C Range: 0 - 360DEG  
C Interval: 10.0DEG  
Test Speed: HIGH  
Temperature:25.3°C  
Operators:  
Test Date:13 December 2022

γ Range: 0 - 160DEG  
γ Interval: 2.5DEG  
Test System:EVERFINE GO-2000A\_V1 SYSTEM V2.00.456  
Humidity:65.0%  
Test Distance:6.265m [K=1.0000]  
Remarks:

## UGR(Unified Glare Rating) Table

NAME: 99LPL094/BL					TYPE:					WEIGHT: 1				
SPEC.:					DIM.: 300 x 110 x 25					SERIAL No.: 0				
MFR.: Elmark Industries JSC					SUR.: rectangle					Shielding Angle:				
ceiling/cavity	0.7	0.7	0.5	0.5	0.3	0.7	0.7	0.5	0.5	0.3				
walls	0.5	0.3	0.5	0.3	0.3	0.5	0.3	0.5	0.3	0.3				
working plane	0.2	0.2	0.2	0.2	0.2	0.2	0.2	0.2	0.2	0.2				
Room dimensions					Viewed crosswise					Viewed endwise				
x = 2H y = 2H	-10.7	-9.6	-9.8	-8.7	-7.5	-4.3	-3.2	-3.5	-2.3	-1.2				
3H	-8.5	-7.4	-7.6	-6.5	-5.3	-0.4	0.6	0.4	1.5	2.7				
4H	-7.3	-6.3	-6.4	-5.4	-4.2	1.7	2.7	2.6	3.6	4.8				
6H	-6.0	-5.0	-5.1	-4.1	-2.9	4.0	4.9	4.9	5.9	7.1				
8H	-5.2	-4.3	-4.3	-3.4	-2.2	5.2	6.1	6.1	7.1	8.3				
12H	-4.4	-3.5	-3.4	-2.5	-1.3	6.6	7.5	7.5	8.4	9.7				
4H 2H	-7.6	-6.6	-6.7	-5.6	-4.4	-3.9	-2.9	-3.0	-1.9	-0.8				
3H	-5.2	-4.4	-4.3	-3.4	-2.2	0.3	1.2	1.2	2.1	3.4				
4H	-4.0	-3.2	-3.1	-2.3	-1.0	2.6	3.4	3.6	4.4	5.7				
6H	-2.8	-2.1	-1.8	-1.1	0.2	5.2	5.9	6.1	6.9	8.1				
8H	-2.2	-1.5	-1.2	-0.5	0.8	6.5	7.2	7.5	8.2	9.5				
12H	-1.4	-0.8	-0.5	0.2	1.5	8.1	8.7	9.0	9.7	11.0				
8H 4H	-1.6	-0.9	-0.6	0.1	1.4	3.0	3.6	3.9	4.6	5.9				
6H	-0.0	0.6	1.0	1.6	2.9	5.8	6.4	6.8	7.4	8.7				
8H	0.8	1.3	1.8	2.3	3.6	7.4	7.9	8.4	8.9	10.3				
12H	1.6	2.0	2.6	3.0	4.4	9.2	9.7	10.2	10.7	12.1				
12H 4H	-0.8	-0.1	0.2	0.9	2.2	3.0	3.6	3.9	4.6	5.9				
6H	1.1	1.6	2.1	2.6	4.0	5.9	6.4	6.9	7.5	8.8				
8H	2.1	2.6	3.1	3.6	4.9	7.7	8.1	8.7	9.1	10.5				
Variations with the observer position at spacings(CIE Pub.117):														
S = 1.0H	+ 0.1 / - 0.1					+ 0.1 / - 0.1								
1.5H	+ 0.2 / - 0.2					+ 0.2 / - 0.3								
2.0H	+ 0.3 / - 0.3					+ 0.3 / - 0.4								

CIE Pub.117, 611.0 lm Total Lamp Luminous Flux Correct (8log(F/F0) = -1.7)  
Area: 0.007 m2

C Range: 0 - 360DEG  
C Interval: 10.0DEG  
Test Speed: HIGH  
Temperature:25.3°C  
Operators:  
Test Date:13 December 2022

γ Range: 0 - 160DEG  
γ Interval: 2.5DEG  
Test System:EVERFINE GO-2000A\_V1 SYSTEM V2.00.456  
Humidity:65.0%  
Test Distance:6.265m [K=1.0000]  
Remarks:

### UTILIZATION FACTORS TABLE

NAME: 99LPL094/BL	TYPE:	WEIGHT: 1
SPEC.:	DIM.: 300 x 110 x 25	SERIAL No.: 0
MFR.: Elmark Industries JSC	SUR.: rectangle	Shielding Angle:

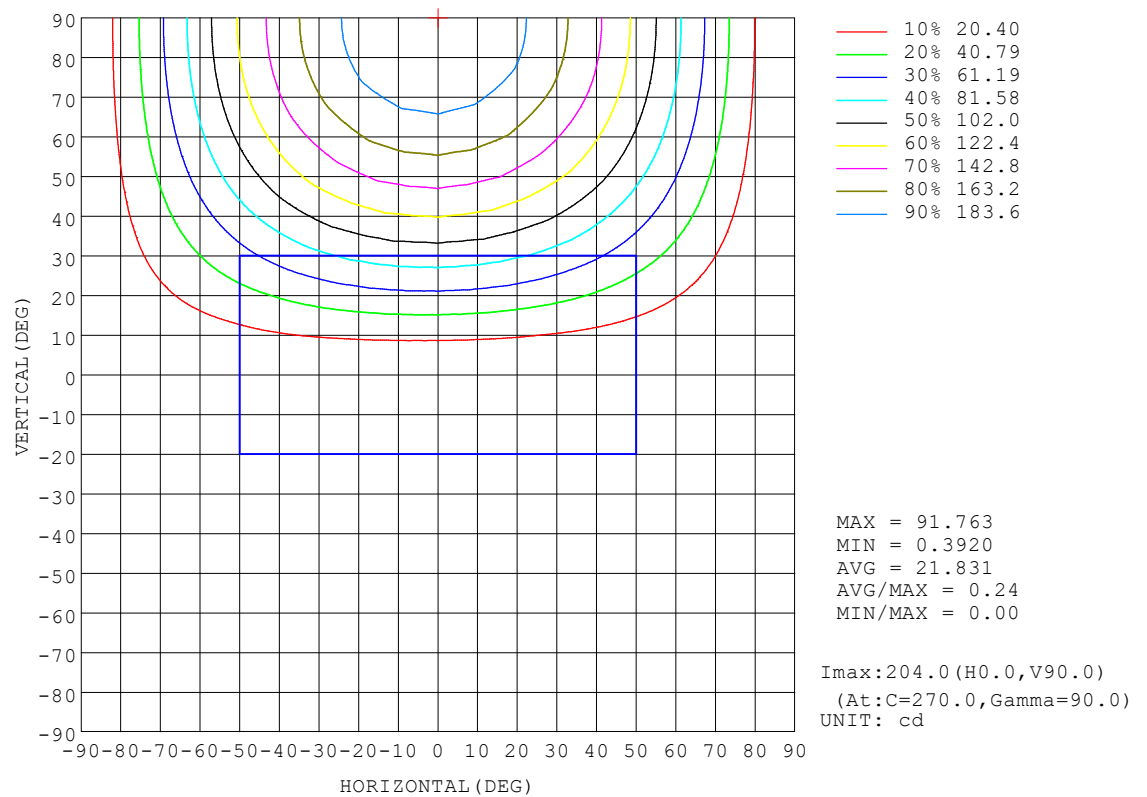
REFLECTANCE										
Ceiling	0.8	0.8	0.8	0.7	0.7	0.7	0.5	0.5	0.5	0
Walls	0.7	0.5	0.3	0.7	0.5	0.3	0.7	0.5	0.3	0
Working plane	0.2	0.2	0.2	0.2	0.2	0.2	0.2	0.2	0.2	0
ROOM INDEX	UTILIZATION FACTORS (PERCENT) $k(RI) \times RCR = 5$									
$k = 0.60$	32	19	12	30	18	12	27	17	11	4
0.80	40	26	18	37	25	17	33	22	15	6
1.00	46	32	23	43	30	22	38	29	20	9
1.25	53	39	29	49	36	27	42	32	24	12
1.50	58	44	34	54	41	32	46	36	28	14
2.00	65	52	43	61	49	40	51	42	35	18
2.50	70	58	49	65	54	46	55	47	40	21
3.00	74	63	54	69	59	51	58	50	44	23
4.00	80	70	62	73	65	58	62	55	49	27
5.00	83	75	67	77	69	62	65	59	53	30
ROOM INDEX	UF(total)									Direct
According to DIN EN 13032-2 2004			Suspended					SHRNOM = 1.25		

C Range: 0 - 360DEG  
C Interval: 10.0DEG  
Test Speed: HIGH  
Temperature: 25.3°C  
Operators:  
Test Date: 13 December 2022

γ Range: 0 - 160DEG  
γ Interval: 2.5DEG  
Test System: EVERFINE GO-2000A\_V1 SYSTEM V2.00.456  
Humidity: 65.0%  
Test Distance: 6.265m [K=1.0000]  
Remarks:

ISOCANDELA DIAGRAM

NAME: 99LPL094/BL	TYPE:	WEIGHT: 1
SPEC.:	DIM.: 300 x 110 x 25	SERIAL No.: 0
MFR.: Elmark Industries JSC	SUR.: rectangle	Shielding Angle:

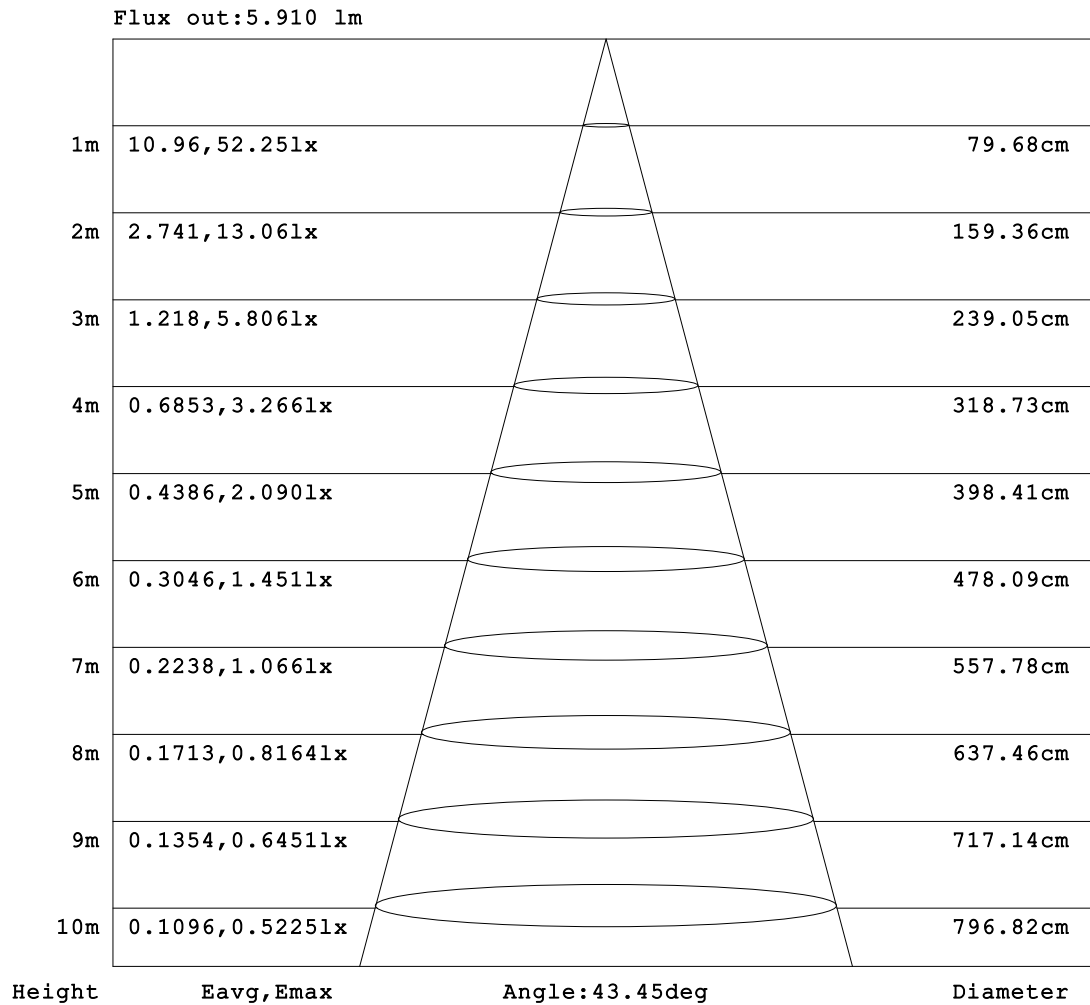


C Range: 0 - 360DEG  
 C Interval: 10.0DEG  
 Test Speed: HIGH  
 Temperature:25.3°C  
 Operators:  
 Test Date:13 December 2022

$\gamma$  Range: 0 - 160DEG  
 $\gamma$  Interval: 2.5DEG  
 Test System:EVERFINE GO-2000A\_V1 SYSTEM V2.00.456  
 Humidity:65.0%  
 Test Distance:6.265m [K=1.0000]  
 Remarks:

**AAI Figure**

NAME: 99LPL094/BL	TYPE:	WEIGHT: 1
SPEC.:	DIM.: 300 x 110 x 25	SERIAL No.: 0
MFR.: Elmark Industries JSC	SUR.: rectangle	Shielding Angle:



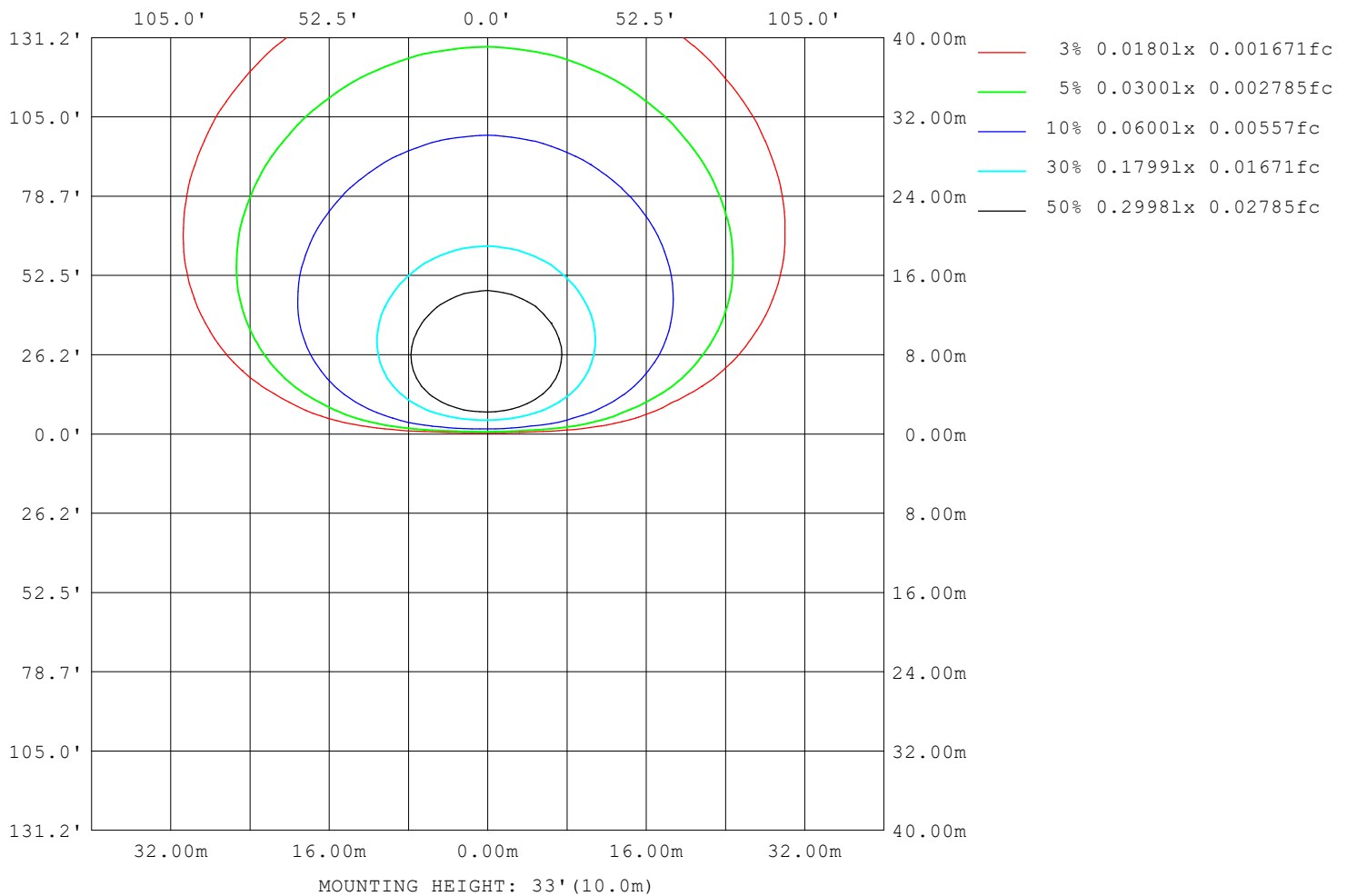
**Note:**The Curves indicate the illuminated area and the average illumination when the luminaire is at different distance.

C Range: 0 - 360DEG  
C Interval: 10.0DEG  
Test Speed: HIGH  
Temperature:25.3°C  
Operators:  
Test Date:13 December 2022

γ Range: 0 - 160DEG  
γ Interval: 2.5DEG  
Test System:EVERFINE GO-2000A\_V1 SYSTEM V2.00.456  
Humidity:65.0%  
Test Distance:6.265m [K=1.0000]  
Remarks:

ISOLUX DIAGRAM

NAME: 99LPL094/BL	TYPE:	WEIGHT: 1
SPEC.:	DIM.: 300 x 110 x 25	SERIAL No.: 0
MFR.: Elmark Industries JSC	SUR.: rectangle	Shielding Angle:



C Range: 0 - 360DEG  
 C Interval: 10.0DEG  
 Test Speed: HIGH  
 Temperature: 25.3°C  
 Operators:  
 Test Date: 13 December 2022

γ Range: 0 - 160DEG  
 γ Interval: 2.5DEG  
 Test System: EVERFINE GO-2000A\_V1 SYSTEM V2.00.456  
 Humidity: 65.0%  
 Test Distance: 6.265m [K=1.0000]  
 Remarks:

### LED Avg.L Report

NAME: 99LPL094/BL	TYPE:	WEIGHT: 1
SPEC.:	DIM.: 300 x 110 x 25	SERIAL No.: 0
MFR.: Elmark Industries JSC	SUR.: rectangle	Shielding Angle:

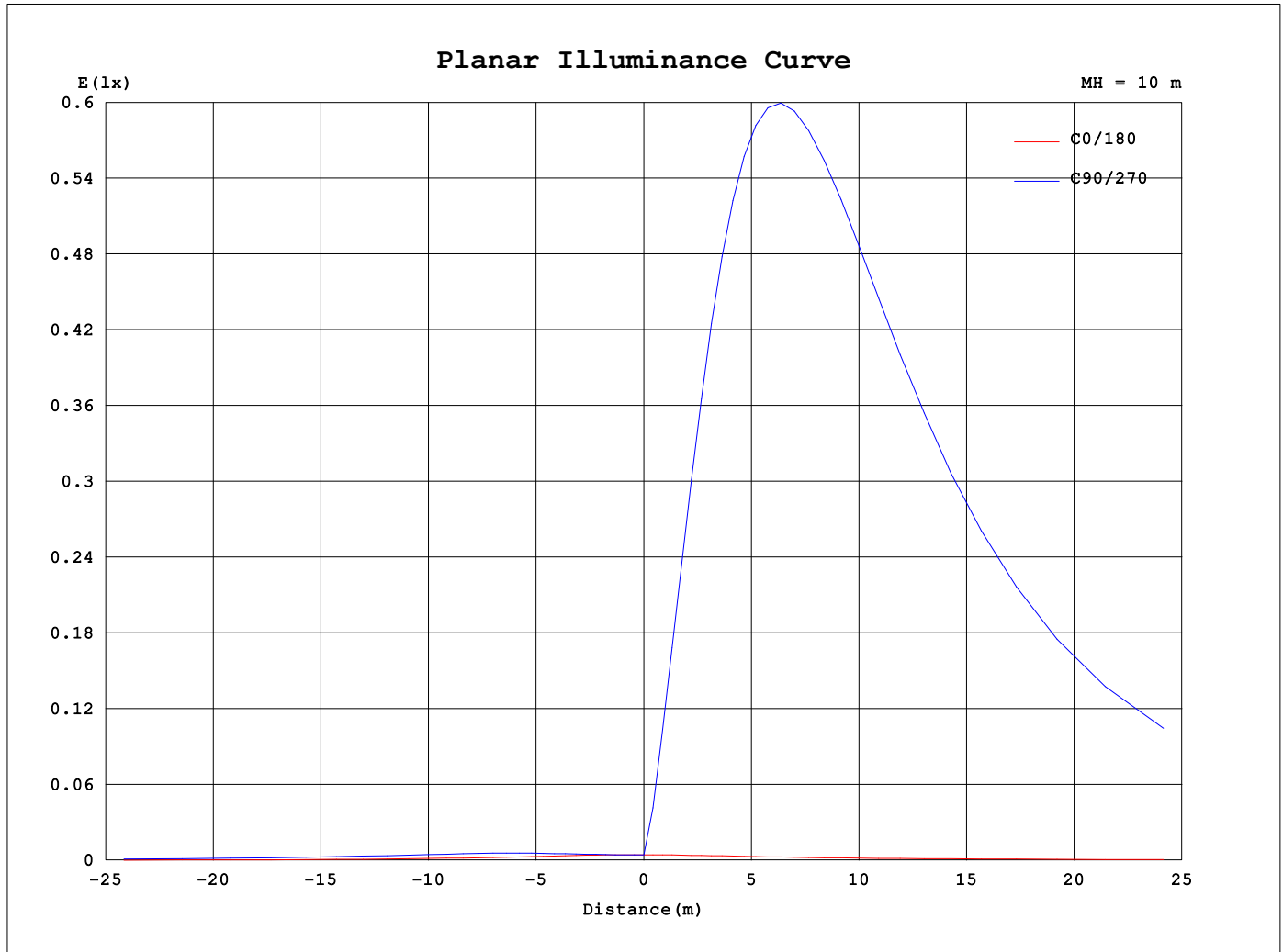
AvgL	cd/m2
L_0~180 (65) av	212
L_0~180 (75) av	382
L_0~180 (85) av	1064
L_90~270 (65) av	32809
L_90~270 (75) av	57636
L_90~270 (85) av	177139
L_45 (65) av	20265
L_45 (75) av	35563
L_45 (85) av	109156

Standard: GB/T 29293-2012

C Range: 0 - 360DEG  
C Interval: 10.0DEG  
Test Speed: HIGH  
Temperature:25.3°C  
Operators:  
Test Date:13 December 2022

γ Range: 0 - 160DEG  
γ Interval: 2.5DEG  
Test System:EVERFINE GO-2000A\_V1 SYSTEM V2.00.456  
Humidity:65.0%  
Test Distance:6.265m [K=1.0000]  
Remarks:

### Planar Illuminance Curve



C Range: 0 - 360DEG  
 C Interval: 10.0DEG  
 Test Speed: HIGH  
 Temperature: 25.3°C  
 Operators:  
 Test Date: 13 December 2022

$\gamma$  Range: 0 - 160DEG  
 $\gamma$  Interval: 2.5DEG  
 Test System: EVERFINE GO-2000A\_V1 SYSTEM V2.00.456  
 Humidity: 65.0%  
 Test Distance: 6.265m [K=1.0000]  
 Remarks:

## LUMINOUS DISTRIBUTION INTENSITY DATA

NAME: 99LPL094/BL	TYPE:	WEIGHT: 1
SPEC.:	DIM.: 300 x 110 x 25	SERIAL No.: 0
MFR.: Elmark Industries JSC	SUR.: rectangle	Shielding Angle:

Table--1

UNIT: cd

C (DEG) γ (DEG)	0	10	20	30	40	50	60	70	80	90	100	110	120	130	140	150	160	170	180
0	0.45	0.45	0.45	0.45	0.45	0.45	0.45	0.45	0.45	0.45	0.45	0.45	0.45	0.45	0.45	0.45	0.45	0.45	0.45
5	0.45	0.44	0.44	0.45	0.44	0.46	0.43	0.46	0.44	0.46	0.42	0.46	0.44	0.45	0.44	0.45	0.44	0.45	0.45
10	0.45	0.43	0.44	0.45	0.44	0.47	0.44	0.49	0.47	0.51	0.45	0.49	0.45	0.47	0.44	0.45	0.44	0.45	0.44
15	0.45	0.43	0.43	0.46	0.44	0.50	0.48	0.54	0.52	0.57	0.50	0.55	0.49	0.50	0.44	0.46	0.44	0.45	0.43
20	0.45	0.42	0.43	0.48	0.46	0.54	0.53	0.60	0.60	0.65	0.58	0.62	0.55	0.55	0.47	0.49	0.44	0.45	0.43
25	0.44	0.41	0.43	0.49	0.50	0.59	0.61	0.72	0.72	0.78	0.70	0.73	0.64	0.61	0.51	0.51	0.44	0.45	0.43
30	0.44	0.41	0.43	0.52	0.54	0.67	0.72	0.85	0.87	0.93	0.84	0.88	0.75	0.70	0.56	0.54	0.44	0.45	0.43
35	0.43	0.41	0.44	0.54	0.60	0.77	0.81	0.97	1.00	1.08	0.97	1.00	0.86	0.80	0.63	0.57	0.46	0.45	0.45
40	0.42	0.41	0.46	0.59	0.68	0.86	0.92	1.09	1.13	1.21	1.10	1.12	0.97	0.89	0.72	0.63	0.48	0.45	0.47
45	0.41	0.41	0.47	0.65	0.74	0.94	1.01	1.21	1.26	1.35	1.22	1.25	1.08	0.98	0.79	0.69	0.50	0.46	0.51
50	0.40	0.41	0.49	0.69	0.80	1.01	1.10	1.33	1.39	1.48	1.34	1.37	1.18	1.07	0.85	0.73	0.52	0.46	0.57
55	0.39	0.41	0.52	0.72	0.84	1.09	1.20	1.43	1.51	1.60	1.45	1.48	1.27	1.16	0.91	0.78	0.56	0.46	0.66
60	0.38	0.41	0.53	0.75	0.89	1.16	1.28	1.54	1.62	1.71	1.55	1.57	1.36	1.22	0.97	0.82	0.59	0.46	0.78
65	0.37	0.41	0.55	0.78	0.93	1.21	1.35	1.63	1.70	1.81	1.63	1.66	1.43	1.29	1.02	0.85	0.61	0.46	0.89
70	0.34	0.41	0.56	0.79	0.96	1.26	1.41	1.69	1.77	1.88	1.70	1.72	1.49	1.34	1.05	0.88	0.62	0.46	0.99
75	0.33	0.40	0.56	0.80	0.99	1.30	1.45	1.74	1.82	1.93	1.75	1.77	1.53	1.38	1.08	0.89	0.63	0.46	1.06
80	0.31	0.40	0.56	0.80	1.01	1.31	1.48	1.76	1.85	1.96	1.77	1.79	1.56	1.39	1.10	0.89	0.64	0.46	1.05
85	0.29	0.39	0.56	0.80	1.02	1.31	1.49	1.76	1.87	1.96	1.79	1.80	1.57	1.39	1.11	0.89	0.64	0.46	1.01
90	0.28	0.38	0.56	0.80	1.02	1.31	1.49	1.75	1.87	1.95	1.79	1.79	1.57	1.38	1.11	0.89	0.64	0.46	0.91
95	0.27	0.38	0.56	0.79	1.02	1.30	1.49	1.73	1.87	1.93	1.79	1.77	1.57	1.37	1.11	0.88	0.65	0.46	0.82
100	0.27	0.37	0.56	0.77	1.00	1.26	1.46	1.69	1.83	1.89	1.75	1.72	1.55	1.34	1.10	0.87	0.65	0.46	0.70
105	0.26	0.36	0.54	0.74	0.96	1.21	1.41	1.63	1.76	1.82	1.70	1.67	1.49	1.30	1.07	0.84	0.64	0.45	0.53
110	0.26	0.35	0.52	0.71	0.92	1.16	1.34	1.55	1.68	1.73	1.62	1.59	1.44	1.24	1.03	0.82	0.63	0.45	0.32
115	0.25	0.34	0.50	0.67	0.87	1.09	1.27	1.46	1.59	1.64	1.53	1.51	1.36	1.18	0.98	0.78	0.61	0.44	0.23
120	0.25	0.32	0.47	0.63	0.81	1.01	1.18	1.37	1.49	1.53	1.43	1.41	1.27	1.11	0.93	0.75	0.59	0.43	0.21
125	0.24	0.31	0.44	0.58	0.75	0.92	1.08	1.25	1.37	1.41	1.33	1.30	1.18	1.03	0.87	0.71	0.57	0.42	0.21
130	0.24	0.29	0.42	0.53	0.68	0.84	0.98	1.14	1.25	1.29	1.21	1.19	1.09	0.95	0.81	0.67	0.55	0.41	0.21
135	0.24	0.28	0.39	0.49	0.62	0.75	0.88	1.01	1.12	1.16	1.10	1.08	0.98	0.86	0.75	0.62	0.52	0.40	0.21
140	0.23	0.27	0.36	0.45	0.56	0.67	0.78	0.90	0.99	1.02	0.98	0.96	0.89	0.79	0.69	0.59	0.50	0.40	0.21
145	0.23	0.26	0.33	0.40	0.50	0.59	0.69	0.78	0.87	0.89	0.86	0.85	0.79	0.71	0.64	0.54	0.47	0.39	0.21
150	0.22	0.24	0.31	0.36	0.45	0.52	0.60	0.68	0.76	0.77	0.75	0.74	0.71	0.64	0.58	0.51	0.45	0.38	0.21
155	0.22	0.23	0.30	0.32	0.39	0.45	0.52	0.58	0.65	0.66	0.65	0.64	0.63	0.57	0.53	0.47	0.43	0.37	0.21
160	0.21	0.22	0.27	0.30	0.34	0.39	0.44	0.50	0.55	0.56	0.55	0.57	0.54	0.52	0.47	0.45	0.40	0.37	0.21
165	0.00	0.00	0.00	0.00	0.00	0.00	0.00	0.00	0.00	0.00	0.00	0.00	0.00	0.00	0.00	0.00	0.00	0.00	0.00
170	0.00	0.00	0.00	0.00	0.00	0.00	0.00	0.00	0.00	0.00	0.00	0.00	0.00	0.00	0.00	0.00	0.00	0.00	0.00
175	0.00	0.00	0.00	0.00	0.00	0.00	0.00	0.00	0.00	0.00	0.00	0.00	0.00	0.00	0.00	0.00	0.00	0.00	0.00
180	0.00	0.00	0.00	0.00	0.00	0.00	0.00	0.00	0.00	0.00	0.00	0.00	0.00	0.00	0.00	0.00	0.00	0.00	0.00

C Range: 0 - 360DEG

C Interval: 10.0DEG

Test Speed: HIGH

Temperature:25.3°C

Operators:

Test Date:13 December 2022

γ Range: 0 - 160DEG

γ Interval: 2.5DEG

Test System:EVERFINE GO-2000A\_V1 SYSTEM V2.00.456

Humidity:65.0%

Test Distance:6.265m [K=1.0000]

Remarks:

## LUMINOUS DISTRIBUTION INTENSITY DATA

NAME: 99LPL094/BL	TYPE:	WEIGHT: 1
SPEC.:	DIM.: 300 x 110 x 25	SERIAL No.: 0
MFR.: Elmark Industries JSC	SUR.: rectangle	Shielding Angle:

Table--2

UNIT: cd

C (DEG) γ (DEG)	190	200	210	220	230	240	250	260	270	280	290	300	310	320	330	340	350		
0	0.45	0.45	0.45	0.45	0.45	0.45	0.45	0.45	0.45	0.45	0.45	0.45	0.45	0.45	0.45	0.45	0.45		
5	0.70	2.13	4.10	5.58	7.46	8.42	10.06	10.5	11.1	9.96	10.01	8.57	7.49	5.68	4.19	2.23	0.73		
10	2.54	6.30	10.5	13.6	17.7	20.0	23.7	24.9	26.0	23.5	23.3	20.1	17.5	13.6	10.3	6.15	2.28		
15	4.83	10.6	17.2	22.4	29.1	33.0	39.0	41.2	42.8	38.7	38.4	33.0	28.6	22.1	16.8	10.2	4.24		
20	7.12	15.0	24.3	31.8	41.4	47.0	55.5	58.6	60.7	55.1	54.4	46.9	40.5	31.2	23.5	14.3	6.22		
25	9.36	19.4	31.6	41.6	54.0	61.3	72.2	76.2	78.9	71.6	70.8	61.1	52.7	40.6	30.5	18.4	8.14		
30	11.5	23.9	39.0	51.4	66.6	75.4	88.7	93.1	96.8	87.5	86.9	75.1	64.9	50.1	37.5	22.5	9.98		
35	13.6	28.4	46.4	61.0	78.9	88.7	104	110	114	103	102	88.3	76.8	59.4	44.5	26.6	11.7		
40	15.6	32.7	53.5	70.2	90.4	102	119	125	130	118	117	101	88.0	68.3	51.2	30.5	13.4		
45	17.5	36.9	60.2	78.9	101	114	133	140	145	132	131	113	98.5	76.6	57.5	34.2	14.9		
50	19.3	40.7	66.4	86.8	111	125	146	154	159	144	143	124	108	84.3	63.4	37.7	16.3		
55	20.8	44.2	72.1	94.0	120	135	158	166	171	156	155	134	117	91.3	68.7	40.9	17.6		
60	22.2	47.4	77.1	100	128	144	168	177	183	166	165	143	125	97.4	73.5	43.7	18.7		
65	23.4	50.0	81.4	106	135	151	177	186	192	175	173	150	131	103	77.5	46.1	19.6		
70	24.3	52.3	84.9	110	141	158	184	194	200	182	180	157	137	107	80.9	48.1	20.3		
75	25.0	54.0	87.7	114	145	163	190	200	207	188	186	162	141	110	83.5	49.6	20.8		
80	25.5	55.2	89.6	116	148	166	194	205	211	192	190	165	144	113	85.3	50.7	21.1		
85	25.7	55.9	90.7	118	150	168	197	207	214	195	192	167	146	114	86.3	51.3	21.2		
90	25.6	55.9	90.9	118	151	169	197	208	215	196	193	168	146	114	86.4	51.3	21.2		
95	25.4	55.5	90.4	118	150	168	197	207	214	195	192	167	145	114	85.9	50.9	20.9		
100	24.9	54.6	89.0	116	148	166	194	205	211	192	190	165	143	112	84.5	50.0	20.4		
105	24.1	53.0	86.8	113	144	162	190	200	206	188	185	161	140	110	82.4	48.6	19.8		
110	22.9	51.0	83.7	109	140	157	183	194	200	182	179	156	136	106	79.4	46.7	18.9		
115	19.3	48.5	79.8	105	134	151	176	185	191	174	172	150	130	101	75.8	44.4	16.0		
120	16.1	45.0	75.2	98.9	127	143	166	176	181	165	163	142	123	95.7	71.4	40.5	12.8		
125	13.4	36.3	70.0	92.3	118	134	156	165	170	155	152	133	115	89.3	66.3	31.0	10.51		
130	11.3	26.4	63.2	84.8	109	124	144	152	157	143	141	123	106	82.1	59.5	22.7	8.72		
135	9.41	21.7	48.9	76.5	98.9	112	131	139	142	130	128	111	95.9	73.9	44.7	18.7	7.20		
140	7.71	20.4	40.4	63.7	87.6	99.8	116	124	127	116	114	99.0	84.8	61.2	35.8	17.8	5.87		
145	6.18	14.9	23.9	44.5	69.1	85.7	101	108	110	101	98.8	84.9	64.2	41.8	22.3	14.1	4.69		
150	4.81	11.1	24.0	23.0	42.8	58.5	77.5	87.2	86.6	81.8	74.7	55.7	38.9	19.7	19.3	9.30	3.64		
155	3.55	8.24	14.2	23.5	20.5	31.5	43.2	50.1	53.0	46.4	40.4	25.5	17.7	20.5	12.2	6.91	2.67		
160	2.38	5.59	9.16	11.8	19.1	21.5	21.8	23.4	23.7	21.2	20.7	19.3	16.6	9.96	7.52	4.57	1.77		
165	0.00	0.00	0.00	0.00	0.00	0.00	0.00	0.00	0.00	0.00	0.00	0.00	0.00	0.00	0.00	0.00	0.00		
170	0.00	0.00	0.00	0.00	0.00	0.00	0.00	0.00	0.00	0.00	0.00	0.00	0.00	0.00	0.00	0.00	0.00		
175	0.00	0.00	0.00	0.00	0.00	0.00	0.00	0.00	0.00	0.00	0.00	0.00	0.00	0.00	0.00	0.00	0.00		
180	0.00	0.00	0.00	0.00	0.00	0.00	0.00	0.00	0.00	0.00	0.00	0.00	0.00	0.00	0.00	0.00	0.00		

C Range: 0 - 360DEG

C Interval: 10.0DEG

Test Speed: HIGH

Temperature:25.3°C

Operators:

Test Date:13 December 2022

γ Range: 0 - 160DEG

γ Interval: 2.5DEG

Test System:EVERFINE GO-2000A\_V1 SYSTEM V2.00.456

Humidity:65.0%

Test Distance:6.265m [K=1.0000]

Remarks: